



Gledhow Gardens, London

£1,600 PW - Fees Apply

A superb example of a 2 bed flat perfectly appointed on the first floor with breath-taking west facing reception room

- Magnificent 1st floor 2 bed flat
- Immaculate interiors
- Front and rear balconies and garden views
- Excellent light and ceiling heights.



Gledhow Gardens London

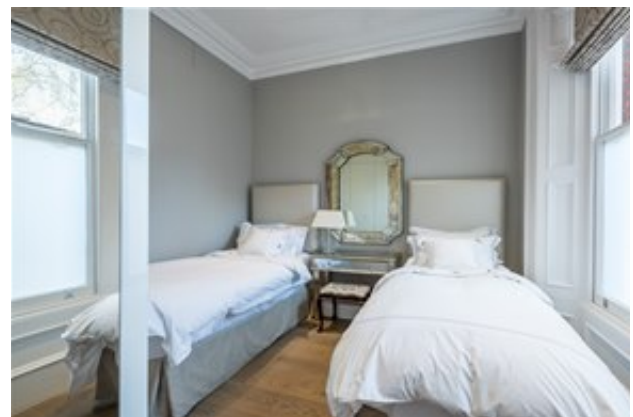
£1,600 PW - Fees Apply

A superb example of a 2 bed flat perfectly appointed on the first floor with breath-taking west facing reception room. Situated in an ideal location overlooking beautifully manicured private communal gardens on both sides (tenants are permitted access subject to the usual consents), beautiful, modern interiors, refurbished recently with wooden floors and underfloor heating throughout.

Accommodation: West facing reception overlooking Gledhow Gardens (access stc) with bay window and French doors onto terrace as well as generous dining area: Fully equipped kitchen with beautiful work top and breakfast bar. Two stunning and luxurious bathrooms (master en-suite): Two double bedrooms with fully fitted full length wardrobes. Master bedroom with access to private terrace overlooking Bina Gardens (access stc).

B

Gledhow Gardens, London £1,600 PW - Fees Apply



B

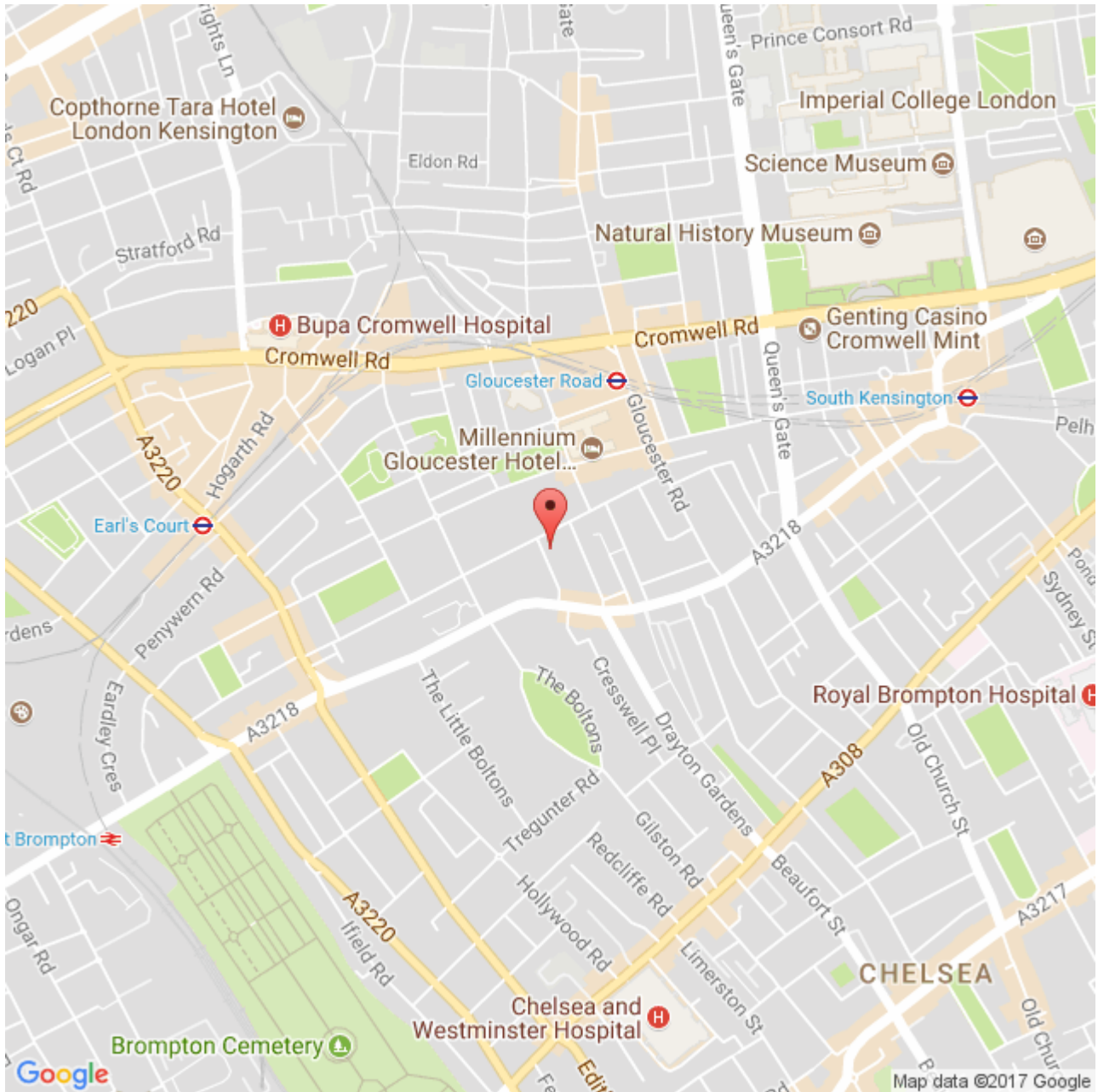
Gledhow Gardens, London

£1,600 PW - Fees Apply



B

Gledhow Gardens, London £1,600 PW - Fees Apply

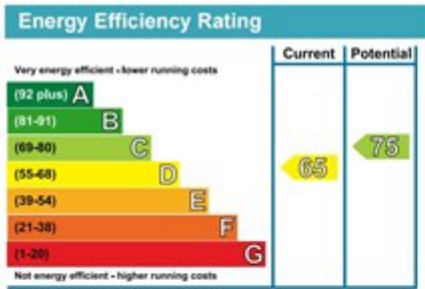


The EPC for this property can be viewed by [clicking here](#)



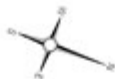
Gledhow Gardens, London

£1,600 PW - Fees Apply



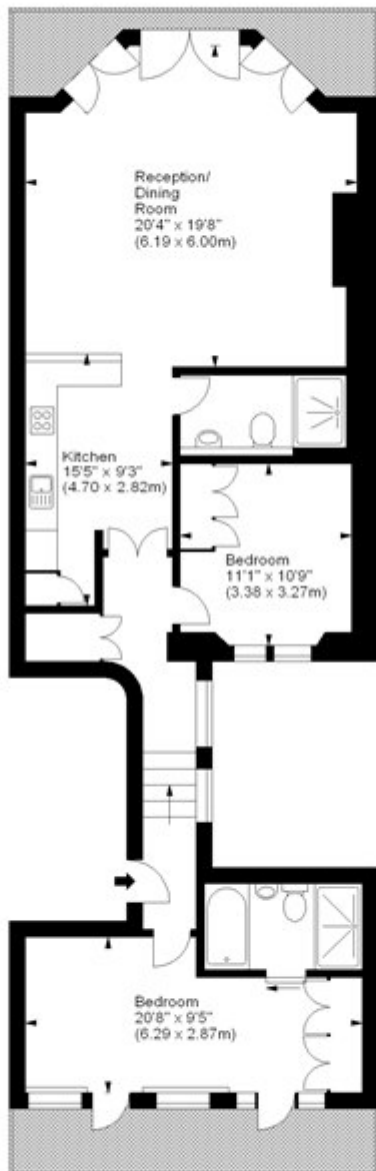
B

Gledhow Gardens, London £1,600 PW - Fees Apply



Gledhow Gardens, SW5

Approx. Gross Internal Area
1010 Sq Ft - 93.83 Sq M



First Floor

For illustration purposes only. Not to scale.
All measurements are taken and shown at floor level.
www.3photography.co.uk © Photography / Floor Plans / Lease Plans / EPCs