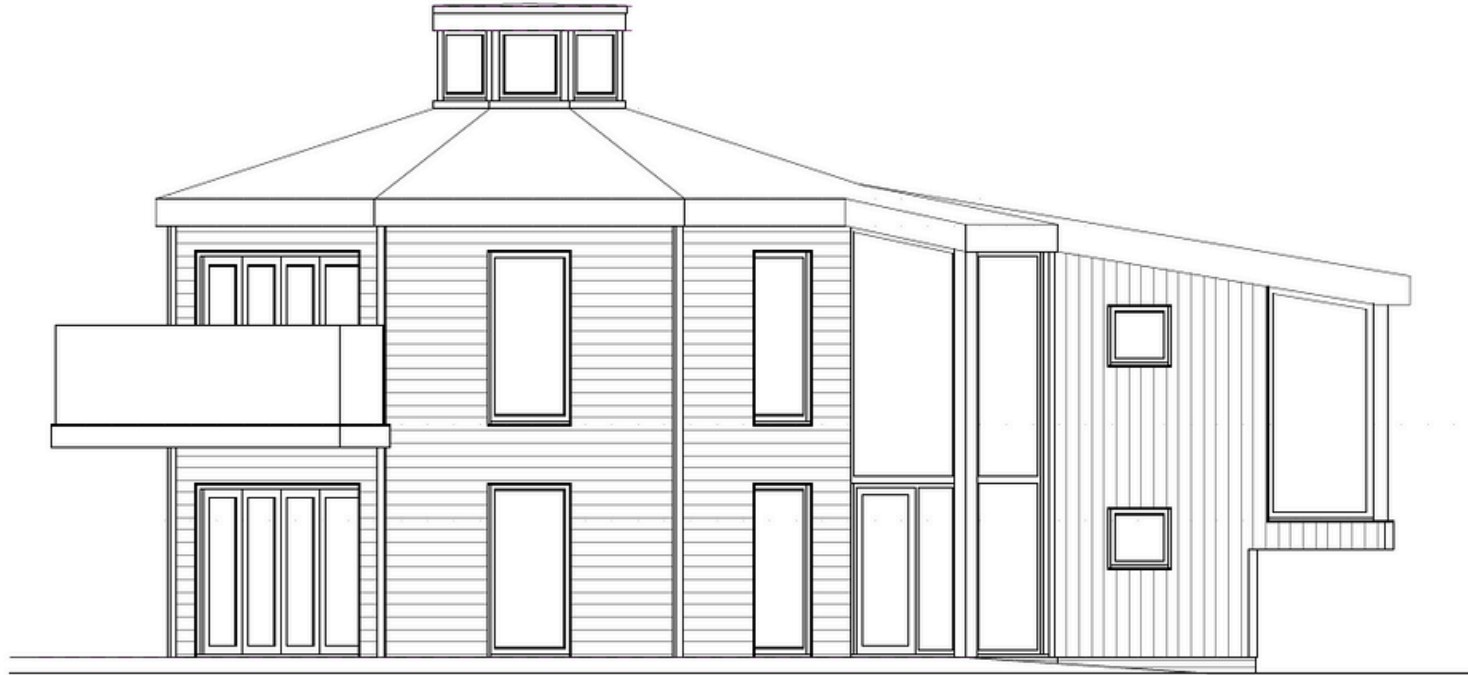


HESSLEWOOD
OFFICE PARK

OFFICE TO LET



The Dovecote

The Dovecote forms part of the exclusive Hesslewood Office Park in Hessle, East Yorkshire. This unique development is newly built, comprising 1200 sq. ft of contemporary space over 2 floors, ideal for any modern business that is looking for premium offices set in a uniquely charismatic setting.

Contact Us

-  www.brooklandsproperty.co.uk
-  info@brooklandsproperty.co.uk
-  Stable Court, Hesslewood Office Park, Hessle, E. Yorkshire, HU13 0RS
-  01482 646060 / 07932 635229

BROOKLANDS
PROPERTY HOLDINGS

Key Features

- Flexible open plan office areas
- Private kitchen areas & WCs
- Designated parking spaces
- EV Charging
- Cooling & heating air conditioning
- Structured data cabling
- Energy efficient LED lighting
- Energy efficient construction with aluminium framed double glazing
- Raised access flooring for ease of cabling



HESSLEWOOD OFFICE PARK

Location

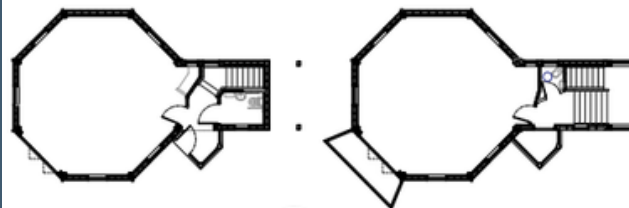
Hesslewood Office Park is situated between the A63 (M62) and the Humber Bridge. Hull city centre is only a 10-minute car journey, and Humberside International Airport is approximately a 15-minute drive.

Facilities

The office park benefits from a host of facilities including landscaped parkland, allocated parking, on-site security, ATM and on-site deli, helipad, three hole 3 par golf course.

Workspace

The Dovecote is a distinctive new building within Hesslewood Office Park; a thriving business hub where historical charm meets modern business functionality. Over 2 floors, the space boasts a contemporary open plan design, perfect for collaborative working. Private kitchens and WCs, allocated parking and EV chargers, provide essential amenities.



Rent

£30,000 per annum plus VAT, exclusive of rates and other outgoings.