



28 Saturday Market, Beverley

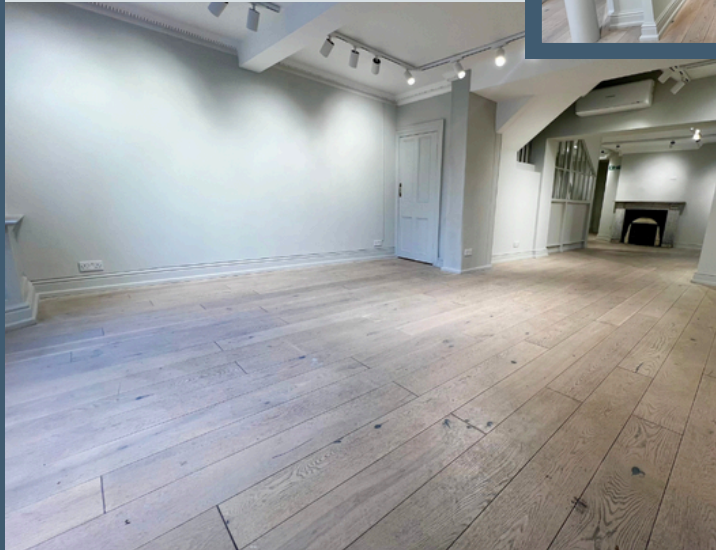
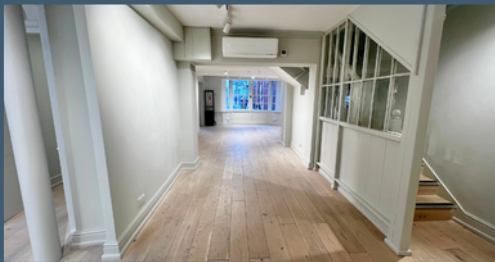
Brooklands Property Holdings is delighted to present a superb opportunity to lease a three-floor retail unit in the highly desirable market town of Beverley. Offering 2,293 square feet of versatile space, this unit is ideal for a variety of retail businesses, providing a solid foundation for success within a thriving community. Situated prominently next to Jo Malone, the property benefits from high visibility and excellent footfall.

Contact Us

-  www.brooklandsproperty.co.uk
-  info@brooklandsproperty.co.uk
-  Stable Court,
Hesslewood Office Park, Hessle
E.Yorkshire, HU13 0RS
-  01482 646060 / 07932 635229

Key Features

- 3 Floor Retail Unit
- 2,293 sq. ft (approx.)
- Prime Beverley Location
- Mid-Terrace Parade
- Prominent Frontage
- Open Plan Sales Areas
- Staff room, Kitchen and WC
- Storage



Rent

£29,950 per annum plus VAT, exclusive of rates and other outgoings.

Location

This retail unit is situated in an excellent central location within the historic market town of Beverley, fronting the busy Saturday Market, ensuring high visibility and accessibility.

The town boasts a mix of independent boutiques, national retailers, and popular eateries, creating a dynamic and appealing environment for businesses. Renowned for its charming atmosphere, vibrant community, and thriving retail scene, Beverley attracts a steady flow of residents and visitors alike.

Excellent transport links and ample local amenities further enhance the appeal of this prime location.

Unit Details

This three-storey retail unit offers a versatile layout, ideally suited for a variety of retail concepts. The entrance lobby and ground floor open-plan sales area provide a welcoming space for customer interaction and product display. A ground floor staff room, kitchen, and WC are also provided for the convenience of staff and customers. The first floor includes further open-plan sales space, with the upper floor offering practical storage for stock and supplies. Forming part of a mid-terrace parade, the property benefits from the established footfall of neighbouring businesses and prominent Saturday Market frontage, ensuring excellent visibility and maximising exposure to passing trade.